

Product Information

Electromechanical Testing Machines LabTest 6.30 - 6.50

Machine use

Electromechanical universal testing machines of the series 6.xx.1 with new design are intended for mechanical tests in tensile, compression and bending during loading of specimens and whole products. Double column bench top or floor top design, with capacity from 30 kN to 50 kN are produced with different heights of testing areas from 1100 mm to 2300 mm, and widths from 460 to 650 mm. The machine frame can be extended to several testing areas (3).

Machine description and main advantages

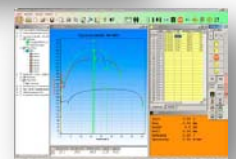
- The testing machine is equipped with a ball screw with preload and a linear guide, which allows partial out off-axis loading of specimens.
- Robustness of the frame ensures high rigidity, durability and resistance against vibration and mechanical damage.
- Machine and working area ergonomic allows easy manipulation with specimens and accessories.
- AC servo drive and belt drive with low noise level ensures low maintenance claims of the machine during tensile and compression testing.
- Ability to manage the machine speed in the range of 0.0005 to 1000 mm/min.
- A modular configuration of the machine with the ability to add any accessories from LABORTECH company, including extensometers, temperature chambers, probes, tools, protection covers etc.
- Due to high data acquisition rate **1 kHz** and high resolution of AD converters **24 bit**, the measuring electronics allows very accurate testing in a large measuring range of the loading cell without any retrofitting of the machine with another sensor.
- High operator comfort and customization tools for specific customer requirements, such as special protective covers, different speeds, different types of special grips, adjustments of X-head travel for custom tools etc.
- Ability to control the machine with a remote control RMC 6 with one button via PC or tablet.

The base machine includes:

- Machine frame including electronics EDC 220
- Bench top design for table version
- "S" series load cell for tension/pressure at full loading
- Remote control RMC 6 with LCD display
- Software integrated in the remote control

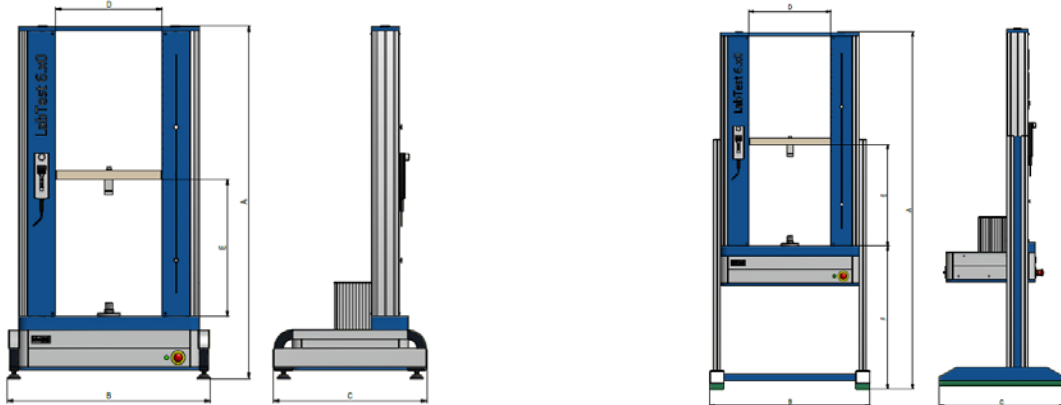
Supplements and Accessories

- Wide range of grips, compression and bending tools
- Extensometers (mechanical, contactless)
- Special temperature chambers high temperature furnaces
- Pneumatic aggregate for grips control
- Possibility of delivery with additional testing areas



Software Test & Motion® Features

- Simple, intuitive and efficient
- Definable all kinds of protocols printing
- Individual files programming
- A set of programs for your own individual testing
- Available almost all standard methods of evaluation
- Special specific applications, programmable modules
- Digital imaging of all channels
- Extensive statistics of results
- Saving of results data in ASCII format, SQL and Excel file
- Transferring data from other devices like touch thickness gauge, scales, etc.
- Compatibility with each EDC box system by Labortech company
- Possibility to add more additional channels
- Quick and efficient testing
- 9 languages (En, Cz, Ge, Fr, Pol, It, Sp, Ru, Du)
- Protocol printing in various languages
- Installation on any computer without a licence



Technical data	Units	6.30.1.10	6.30.1.120	6.30.1.130	6.30.1.11	6.30.1.21	6.30.1.31	6.50.1.10	6.50.1.20	6.50.1.30	6.50.1.11	6.50.1.21	6.50.1.31
Load capacity	kN	30						50					
Number of columns		2											
Number of ball lead screws		2											
Number of linear guides		2+2											
Minimum testing speed	mm/min	0,0005						0,0005					
Maximum testing speed	mm/min	1000						1000					
Travel resolution	μm	0,0406						0,0651					
Repeatability of X-head travel	μm	±1						±2					
Weight ¹	kg	190	224	266	247	291	345	295	340	390	442	490	490
Dimensions²													
Height of the Machine (A)	mm	1530	1970	2570	1530	1970	2570	1635	2265	2635	2265	2765	2635
Width of the Machine (B)	mm	877	877	877	1067	1067	1067	877	877	877	1100	1100	1117
Depth of the Machine (C)	mm	663	663	663	663	663	663	760	760	760	760	760	760
Width of test space (D)	mm	460			650			400			640		
Height of test space (E)	mm	1100	1700	2300	1100	1700	2300	1145	1645	2145	1645	2145	2145
Environmental conditions													
Operating temperature	°C	10 to 35											
Storage temperature	°C	-35 to 55											
Humidity range	%	< 90											
Noise level ³	dB	< 65											
Electrical connection													
Supply voltage	V	230 ... 240 / 50-60Hz						230 ... 240 / 50-60Hz					
Fuse	A	16						16					
Power Rating	kVA	1,3						2,1					

¹Without accessories

²Changing parameters for 6.30: extension dimension A in the range of +230 or +580 mm B +23 mm, C +237 mm, F +500 mm or +850 mm. Stand weight 48 kg

Changing parameters for 6.50: extension dimension A in the range of +212 or +562 mm B +23 mm, C +140 mm, F +500 mm or +850 mm. Stand weight 57 kg

³Measured at 1 m distance from testing machine without loading

Technical changes are reserved by manufacturer

Manufacturer:

LABORTECH s.r.o., Rolnická 130a, 747 05 Opava, Czech republic. Tel.: +420 553 731 956, +420 553 775 327
Mob.: +420 602 527 646, +420 731 656 723, info@labortech.cz, www.labortech.cz, Czech republic

